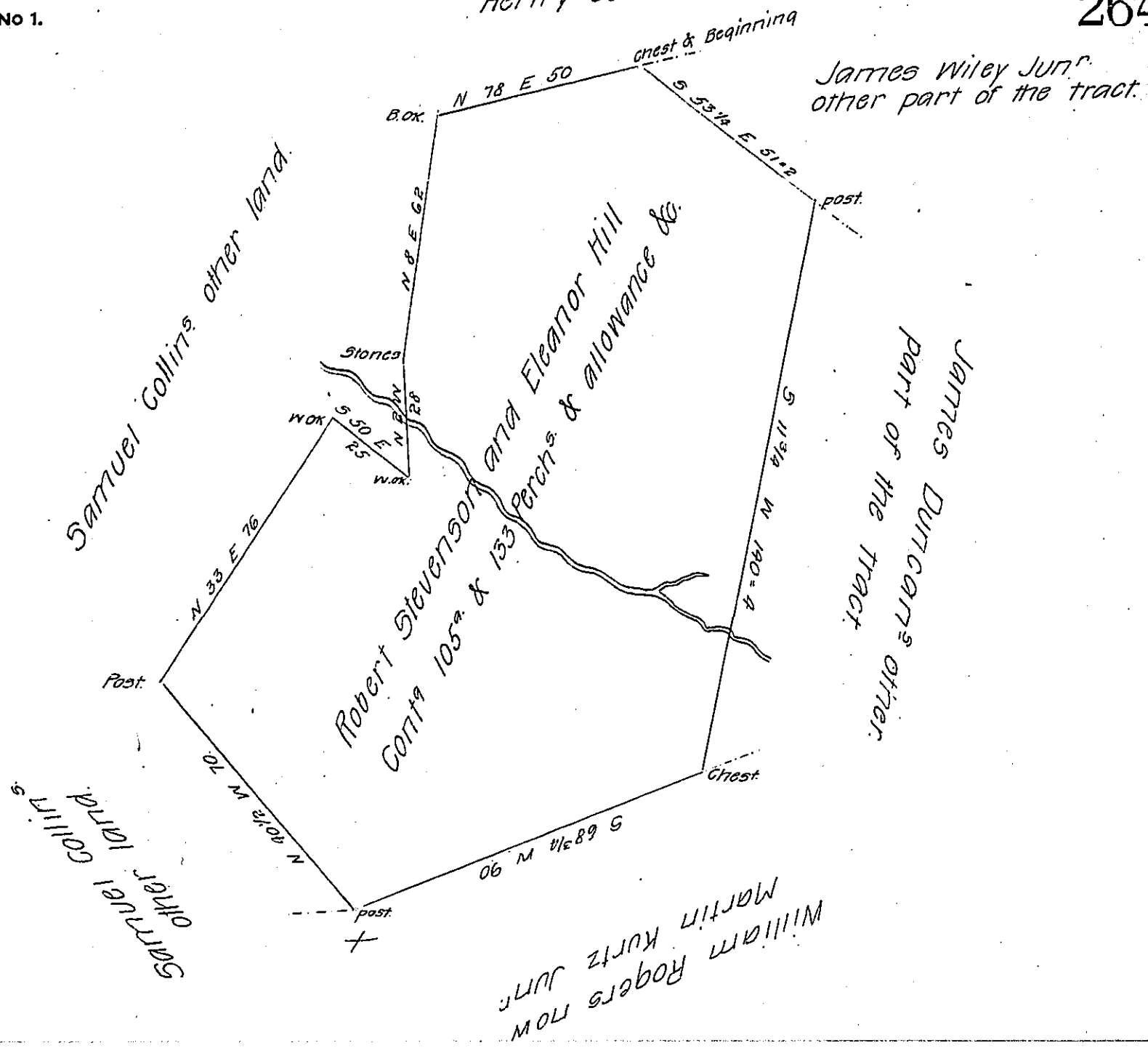


John Lewdert Nov  
Henry Gest.



Situate in Fawn township in the County of York, containing as above set forth 105<sup>a</sup> & 133 perches and allowance &c. Being part of a larger tract of 189<sup>a</sup> & allowance &c. which was originally surveyed by George Stevenson late D.S. on the 22<sup>d</sup> day of November 1759. In pursuance of a warrant granted to Robert Stevenson and Eleanor Hill bearing date the 16<sup>th</sup> day of December A.D. 1758 # And afterwards on the 28<sup>th</sup> of the 11<sup>th</sup> mo. 1769. Resurveyed ~~and~~ by William Matthews late D.S. and a piece of vacancy added by virtue of an order of the Board of Property dated the 27<sup>th</sup> day of February 1769 and divided off from the said larger tract as above represented. Resurveyed by the old lines at the request of the present owner Samuel Collins on the 11<sup>th</sup> day of May A.D. 1810. who desired the same to be returned for confirmation.

To Andrew Porter Esq<sup>r</sup>.  
Surveyor General, Lancaster pa.

Per. Jacob Spangler D.S.  
Say the 16<sup>th</sup> day of Dec<sup>r</sup> 1753. James McCullough.

IN TESTIMONY that the above is a copy of the original remaining on file in the Department of Internal Affairs of Pennsylvania, made conformably to an Act of Assembly approved the 16<sup>th</sup> day of February, 1833, I have hereunto set my Hand and caused the Seal of said Department to be affixed at Harrisburg, this eighth day of January 1907.

*Loacn D. Brown*  
Secretary of Internal Affairs.